

**Always**  
*A Bridesmaid*

**MAMMA  
MIA!**

Disney's  
**BEAUTY  
AND THE  
BEAST**

**HAPPY  
DAYS**

**GRUMPY OLD MEN**  
THE MUSICAL

**ON YOUR  
FEET!**  
THE STORY OF EMILIO  
& GLORIA ESTEFAN

Marcello Gelletti's  
**Miracle**  
on 34th Street

**2021**  
**OUR 35<sup>th</sup> SEASON**

**DUTCH APPLE**  
DINNER THEATRE

**Call 717-898-1900 or order online at [DutchApple.com](http://DutchApple.com)**

510 Centerville Road Lancaster, PA 17601





*Beauty and the Beast*

# VISITING WITH A GROUP MAKES **EVERYTHING MORE FUN!**

**PARTIES OF 16 OR MORE RECEIVE SPECIAL DISCOUNTS**  
**ENJOY MORE THAN JUST A SHOW!**



## **PRIVATE CLASSES**

For one hour before your dinner and show, your group can have a private instructional session with our professional actors and creative staffs and it can be as interactive as you like. Just \$15.00 per person.



## **GROUP ADD ON EXPERIENCE**

Enhance your group's visit with a welcome from a cast member, private Q&A after the show, autographed program and more!  
Just \$9.99 per person.

---

## **LET OUR SALES TEAM HELP YOU PROMOTE YOUR NEXT TRIP TO DUTCH APPLE!**

Visit the group page at [DutchApple.com](https://DutchApple.com) to download a wide variety of support materials such as: Show Flyers, Sales Videos, Theatre Images, Show Logos, Brochures and more!

# SAVE UP TO 25% OFF WITH A MEMBERSHIP!

Book more shows and save more off the regular dinner and show price!

## PRODUCER'S CIRCLE

Book 7 Shows

**SAVE 25%**

## DIRECTOR'S CIRCLE

Book 5-6 Shows

**SAVE 20%**

## STAR CIRCLE

Book 3-4 Shows

**SAVE 15%**

## **TRADITIONAL MEMBERSHIP**

Choose your shows, dates  
and favorite seats now!

## **FLEX MEMBERSHIP**

Choose the shows now and pick  
your dates when you're ready!

## **VIP BENEFITS OF BEING A MEMBER!**

### **CONCERT DISCOUNTS**

Get your same membership level discount  
for all concert tickets.

### **ADVANCE SEATING**

Before the doors open to the general public,  
we will seat our members.

### **A SPECIALTY APPETIZER**

A delicious appetizer delivered to your table  
after you are seated.

### **SEE IT AGAIN FOR 50% OFF!**

Return for dinner and show for a second or  
even third time and get 50% off the regular  
ticket price! (Not valid Thursday evenings)

### **TICKET EXCHANGES**

Convenient ticket exchange for your busy  
schedule at no cost.

### **PRIORITY RENEWAL**

Choose your seats before the tickets go on  
sale to the general public!



*On Your Feet photo courtesy of Jamie Wilson Productions*



**JANUARY 7 – FEBRUARY 14**



This hilarious play is a marriage-go-round journey of four friends who have sworn to keep the promise they made on the night of their senior prom: to be in each other's wedding, no matter what. More than 30 years later, these Southern friends-for-life are still making the "long walk" for each other, determined to honor that vow.

If you're a fan of *Dixie Swim Club* and *Savannah Sipping Society*, you'll love the journey of these friends through the choppy waters of love and matrimony.

**RATED PG**

**RUNNING TIME:**  
2 hours

**Always**  
*A Bridesmaid*

	S	M	T	W	T	F	S
	3	4	5	6	MAT EVE	EVE	MAT EVE
JANUARY	MAT 10	11	12	MAT 13	MAT 14	EVE 15	MAT EVE 16
	MAT 17	18	19	MAT 20	EVE 21	EVE 22	MAT EVE 23
	TWI 24	25	26	MAT 27	MAT 28	EVE 29	MAT EVE 30
	MAT 31	1	2	MAT EVE	EVE 4	EVE 5	EVE 6
FEBRUARY	MAT 7	8	9	MAT 10	MAT 11	EVE 12	MAT EVE 13
	MAT 14	15	16	17	18	19	20



## FEBRUARY 19 – APRIL 3

Goodbye gray skies, hello blue! Happy days are here again with your favorite characters: Richie, Potsie, Ralph Malph and the unforgettable “king of cool” Arthur “The Fonz” Fonzarelli in this fresh new musical based on the classic TV series.

The famed drive-in and number one hangout, Arnold’s, is in danger of demolition; so, the gang teams up with a plan to save it. Return to the days of varsity sweaters, hula hoops and jukebox sock-hoppin’ fun that will have you and the family rockin’ and rollin’ all week long!

**RATED PG**

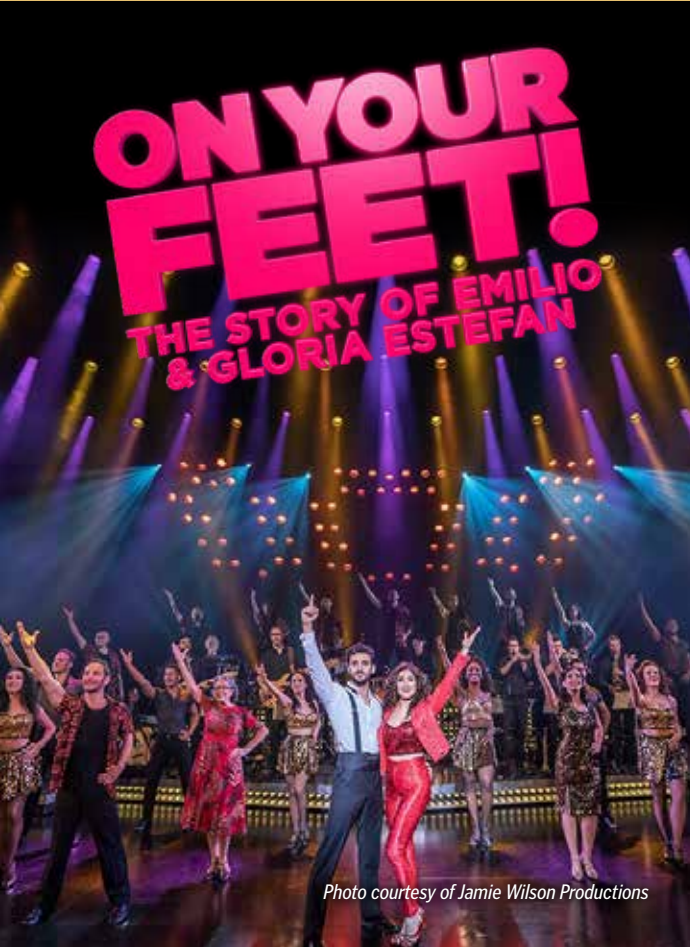
**RUNNING TIME:**  
2 hours and 10 minutes

	S	M	T	W	T	F	S
FEBRUARY	14	15	16	17	18	19 MAT EVE	20 MAT EVE
	MAT 21	22	23	MAT 24	MAT 25	EVE 26	MAT EVE 27
MARCH	MAT 28	1	MAT 2	MAT EVE 3	MAT 4	EVE 5	EVE 6
	7 TWI	8	9	MAT 10	MAT EVE 11	EVE 12	MAT EVE 13
APR	14 TWI	15	16	MAT EVE 17	MAT 18	EVE 19	EVE 20
	MAT 21	22	23	MAT 24	MAT EVE 25	EVE 26	MAT EVE 27
APR	MAT 28	29	30	MAT EVE 31	MAT EVE 1	EVE 2	MAT EVE 3



*Photo courtesy of Derby  
Dinner Playhouse*

**APRIL 15 – MAY 29**



*Photo courtesy of Jamie Wilson Productions*

Get on your feet and hear the inspiring true story about heart, heritage and two people who believed in their talent and each other: Gloria and Emilio Estefan. This vibrant musical follows their incredible journey from anonymity in Cuba to stardom in the United States.

*On Your Feet!* features some of their most iconic songs including “Rhythm is Gonna Get You,” “Get On Your Feet,” “Don’t Want to Lose You Now,” and “Coming Out of the Dark.” You’ll be dancing and singing from start to finish!

**RATED PG**

**RUNNING TIME:**  
2 hours and 15 minutes

	S	M	T	W	T	F	S
APRIL	11 MAT EVE	12 MAT EVE	13 MAT EVE	14 MAT EVE	15 MAT EVE	16 EVE	17 MAT EVE
	18 MAT	19	20	21 MAT EVE	22 EVE	23 EVE	24 MAT EVE
	25 MAT	26	27	28 MAT	29 MAT EVE	30 EVE	1 EVE
MAY	2 TWI	3	4 EVE	5 MAT EVE	6 MAT	7 EVE	8 EVE
	9 MAT	10	11	12 MAT EVE	13 EVE	14 EVE	15 MAT EVE
	16 TWI	17	18	19 MAT EVE	20 EVE	21 EVE	22 MAT EVE
	23 TWI	24	25	26 MAT EVE	27 MAT EVE	28 EVE	29 MAT EVE

## JUNE 3 – JULY 31

Be our guest in the enchanted world of Disney's *Beauty and the Beast* with a young woman in a provincial town named Belle, and the Beast who is really a young prince trapped under the spell of an enchantress. If the Beast can learn to love and be loved, the curse will be broken, and he will be transformed into his former self...but time is running out!

With classic songs such as "Belle," "Be Our Guest," "Gaston," and "Beauty and the Beast," this tale as old as time will bring your entire family together.

**RATED G**

**RUNNING TIME:**  
2 hours 20 minutes

	S	M	T	W	T	F	S
JUNE	30	31	1	2	MAT EVE	EVE	MAT EVE
	MAT 6	7	EVE 8	MAT EVE 9	MAT 10	EVE 11	MAT EVE 12
	TWI 13	14	EVE 15	MAT EVE 16	EVE 17	EVE 18	MAT EVE 19
	MAT 20	21	EVE 22	MAT EVE 23	MAT EVE 24	EVE 25	EVE 26
JULY	TWI 27	28	EVE 29	MAT EVE 30	MAT EVE 1	EVE 2	MAT EVE 3
	4	5	EVE 6	MAT EVE 7	MAT 8	EVE 9	MAT EVE 10
	TWI 11	12	EVE 13	MAT EVE 14	MAT 15	EVE 16	EVE 17
	MAT TWI 18	19	EVE 20	MAT EVE 21	EVE 22	EVE 23	MAT EVE 24
	MAT 25	26	27	MAT EVE 28	MAT EVE 29	EVE 30	MAT EVE 31





## AUGUST 5 – SEPTEMBER 4



**BACK BY POPULAR DEMAND FOR A LIMITED RUN!** This is the story of two aging men, Max and John, neighbors who have been feuding most of their lives. They are reunited in friendship through the love and compassion of their new neighbor across the street—the beautiful, eccentric and charming, Ariel.

Based on the 1993 hit film, don't miss this laugh-out-loud story of family, friendship, love and romance in a fresh new musical that's guaranteed to delight!

**RATED PG-13**

**RUNNING TIME:**

2 hours and 30 minutes

	S	M	T	W	T	F	S
AUGUST	1	2	3	4	MAT EVE	EVE	MAT EVE
	MAT	9	10	MAT EVE	MAT	EVE	MAT EVE
	15	16	EVE	MAT EVE	MAT	EVE	MAT EVE
	22	23	MAT	MAT EVE	EVE	EVE	MAT EVE
SEPT	29	30	31	MAT EVE	MAT EVE	EVE	MAT EVE

## SEPTEMBER 9 – NOVEMBER 6

The Broadway hit comes right to our stage! Told through ABBA's greatest hits, this comical story finds a young bride-to-be in search of her birth father on a beautiful Greek island. After reading her mom's diary, Sophie secretly invites the three men her mom wrote about to her wedding.

This enchanting and unforgettable tale of love, laughter, family and friendship is set to classic ABBA songs including "Dancing Queen," "Take a Chance on Me," "SOS," and the title song "Mamma Mia"!

**RATED PG**

**RUNNING TIME:**  
2 hours and 30 minutes

	S	M	T	W	T	F	S
SEPTEMBER		5	6	7	8	MAT EVE	9 10 MAT EVE
	MAT	12	13	14	MAT EVE	MAT EVE	17 18 MAT EVE
	TWI	19	20	EVE	MAT EVE	EVE	24 25 MAT EVE
	MAT	26	27	EVE	MAT EVE	MAT	1 2 EVE MAT EVE
OCTOBER	TWI	3	4	5	MAT EVE	MAT EVE	7 8 EVE MAT EVE
	TWI	10	11	12	MAT EVE	MAT EVE	15 16 EVE MAT EVE
	MAT	17	18	EVE	MAT EVE	MAT	22 23 EVE MAT EVE
	MAT	24	25	MAT	MAT EVE	EVE	29 30 EVE MAT EVE
NOV	MAT	31	1	EVE	MAT EVE	MAT EVE	4 5 EVE MAT EVE



## NOVEMBER 11 – DECEMBER 23



Six-year-old Susan Walker doesn't fill her head with romantic notions like believing in Santa Claus. But when she meets the department store Santa who may in fact be the real Kris Kringle, a wave of love spreads across New York City and the little girl's beliefs make all the difference!

Based on the film of the same name, this holiday favorite will melt even the most cynical hearts!

**RATED PG**

**RUNNING TIME:**  
2 hours and 20 minutes

	S	M	T	W	T	F	S
NOVEMBER	7 MAT EVE	8 MAT EVE	9 MAT EVE	10 MAT EVE	11 MAT EVE	12 EVE	13 MAT EVE
	14 MAT EVE	15 MAT EVE	16 MAT EVE	17 MAT EVE	18 MAT EVE	19 EVE	20 EVE
	21 MAT EVE	22 MAT EVE	23 MAT EVE	24 MAT EVE	25 MAT EVE	26 EVE	27 EVE
	28 MAT EVE	29 MAT EVE	30 EVE	1 MAT EVE	2 MAT EVE	3 EVE	4 MAT EVE
DECEMBER	5 MAT EVE	6 MAT EVE	7 EVE	8 MAT EVE	9 MAT EVE	10 EVE	11 MAT EVE
	12 MAT EVE	13 MAT EVE	14 EVE	15 MAT EVE	16 MAT EVE	17 EVE	18 EVE
	19 MAT EVE	20 MAT EVE	21 MAT EVE	22 MAT EVE	23 MAT EVE	24 EVE	25 EVE





# CONCERTS AND COMEDIANS

We have plenty of concerts and comedy coming your way in 2021! This year we'll be offering two weeks of exciting entertainment in April and December, including a celebratory New Year's Eve performance. Now you'll be able to see more of your favorite concert and comedy acts. Season Ticket Holders can add these concerts to your membership when they are announced at your same discount price!

★ **April 7 – 11 & December 26 – 31**

**STAY TUNED FOR DETAILS!**

**Evenings:** 6:00 Dinner ★ 7:30 Show

**Matinees:** 11:30 Lunch ★ 1:00 Show

**\$69** Dinner and Show ★ **\$45** Show Only

**\$100** Special New Year's Eve Performance

# OUR CHILDREN'S THEATRE OFFERS MORE TO LOVE!

Dutch Apple's Children's Theatre is fun for everyone! The lunch offers plenty of options for children to love like hamburgers, pizza, chicken nuggets, a salad bar, yogurt, applesauce and of course, desserts! After each show, the cast stays on stage to answer questions from the audience and sign autographs.



**March 5 -  
April 2**

This delightful adaptation of Jeff Brown's beloved children's book brings everyone's favorite two-dimensional hero to life with infectious songs and non-stop adventure. Stanley Lambchop is your ordinary, everyday 10-year-old until the bulletin board on the wall above his bed comes loose and falls right on top of him. The next morning, Stanley wakes up flat! Looking for a solution to his unusual problem, he searches the globe to become the three-dimensional boy he once was.

**10:30 Lunch, 11:30 Show**

March 5, 9, 12, 16, 19, 23, 26, 30 • April 2

**11:45 Lunch, 12:45 Show** • March 6, 7, 14, 20



**April 30 -  
May 25**

All of the sea-creatures admire the famous Rainbow Fish, the most beautiful fish in all the ocean. When Rainbow Fish refuses to share his vibrant, shimmering scales, the whole ocean turns against him. Unhappy to not have any more fans, Rainbow Fish seeks out the wise Octopus, who helps the young fish learn that it's far better to be admired for being kind than for being beautiful.

**10:30 Lunch, 11:30 Show**

April 30 • May 4, 7, 11, 14, 18, 21, 25

**11:45 Lunch, 12:45 Show** • May 1, 2, 8, 16, 23



**June 25 -  
July 23**

In the Kingdom of Auradon, Disney's beloved heroes and royalty are living happily ever after, safe from the terrifying villains and sidekicks they have banished to the magic-free Isle of the Lost. That is until Ben, the teenage son of Belle and King Adam (The Beast) offers redemption for the troublemaking children of Maleficent, the Evil Queen, Cruella De Vil, and Jafar when they are welcomed to Auradon Prep to attend school with the children of their parents' sworn enemies. When faced with a completely foreign world and way of life, the four villain kids have a difficult choice to make: follow in their parents' wicked footsteps or learn to be good?

**11:45 Lunch, 12:45 Show**

June 25, 26, 27, 29 • July 2, 6, 9, 11, 13, 16, 17, 20, 23



**November 26 -  
December 30**

Based on the bestselling children's book of the same name, *No Dogs Allowed* is the story of 8-year-old Iris who lives in New York City with her family and her dog El Exigente. One bright and sunny day, the family decides to take a trip to the Enchanted State Park. Adventures ensue when Iris is determined to bring her beloved El Exigente with them even though the park says 'no dogs allowed'!

**10:30 Lunch, 11:30 Show**

December 3, 7, 10

**11:45 Lunch, 12:45 Show**

November 26, 27 • December 5, 17, 28, 29, 30

## TICKET PRICES (Lunch and Show)

Kids of all ages.....\$19  
Groups of 16 or more.....\$18

School Groups.....\$17  
Show Only.....\$17

# JUST THE FACTS

## GROUP GUIDELINES:

- ✦ Prices are per person for groups of 16 or more. Group rates include dinner, show, coffee, tea, tax and meal gratuity. Gratuity on alcoholic beverages and soda purchases is not included.
- ✦ Choose two possible dates when booking in case your first date is not available. The best available seating is booked at the time of reservation.
- ✦ If your group is arriving by motorcoach, the group leader and driver receive a non-transferable complimentary dinner and show ticket and a 20% discount card to use in the gift shop on the performance date.
- ✦ If your group is arriving by car, every 21st person will receive a complimentary dinner and show ticket.
- ✦ \$100 deposit is due one month after making the reservation. Deposit is refunded if reservation is canceled in writing 30 days prior to the performance date.
- ✦ Final count and final payment are due three weeks prior to performance date.
- ✦ Flexible snow policy with no questions asked.
- ✦ All sales are final and non-refundable. Full credit will be given in the event of a cancelled performance.
- ✦ No steps in the entire building! Free and well-lit parking.

## SEASON MEMBERSHIP GUIDELINES:

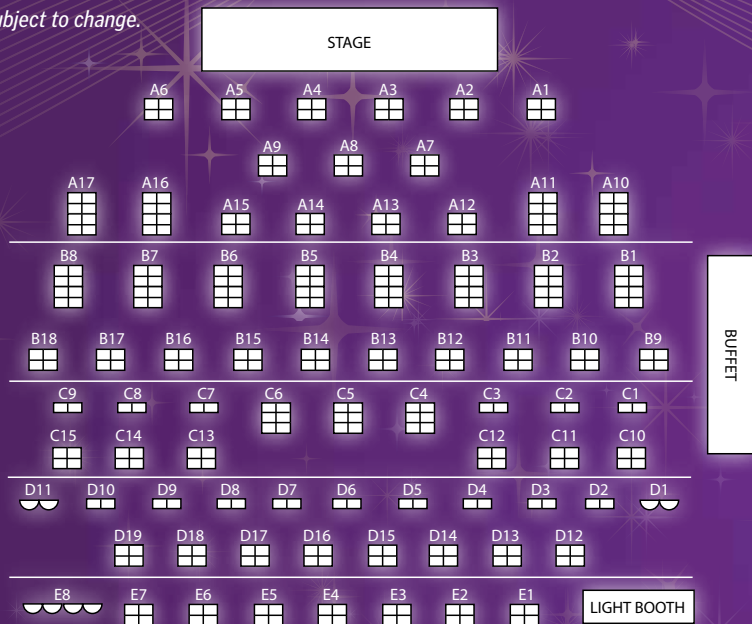
- ✦ Reserve early! Seats are assigned in the order the forms are received.
- ✦ Three or more shows per person must be purchased and maintained to receive the membership price.
- ✦ Membership tickets may be exchanged for a different date of the same show or for another show that you do not already have booked.
- ✦ Membership prices include meal, show and tax. Gratuity is not included.
- ✦ 2021 memberships expire at the end of the 2021 season, are non-refundable and can't be extended to the next season.
- ✦ Membership discount is not valid on New Year's Eve or Special Events.
- ✦ If you plan to attend with someone purchasing a different number of shows than yourself, complete separate forms for your parties but submit them together.
- ✦ There is a non-refundable \$5 per order processing fee.

Learn more about these programs on **DutchApple.com**



# PULL UP A SEAT FOR GREAT ENTERTAINMENT

Seating is subject to change.



## BOX OFFICE HOURS

Monday	9:00 am to 5:00 pm
Tuesday-Friday	9:00 am to 7:30 pm
Saturday	10:00 am to 7:30 pm
Sunday	12:00 noon to 4:00 pm

Times may vary during winter months and on Sundays.

## DOWNLOAD OUR APP!

Check out the latest happenings, look up show schedules and purchase tickets all in this handy app that you can take with you everywhere!  
Download the app from your app store.

## CREDIT CARDS ACCEPTED

Visa, MasterCard, American Express & Discover

## SHOW PRICES

Individual  
Tickets

Group  
Price\*

### Evening Performances

Dinner 6:00 pm

Showtime 7:30 pm

Tuesday-Wednesday Evening ..... \$61 ..... \$57

Friday & Saturday Evening ..... \$69 ..... \$64

### Sunday Twilight

Dinner 5:30 pm

Showtime 7:00 pm ..... \$61 ..... \$57

### Thursday Served Evening Performances

Dinner 5:30 pm

Showtime 7:30 pm

Served Menu ..... \$65 ..... \$60

Show Only, Any Seat ..... \$45 ..... \$45

### Matinee Performances \*NEW TIMES

Lunch 11:30 am

Showtime 1:00 pm ..... \$60 ..... \$58

### Children Dinner & Show

Students (Ages 13-18) ..... \$30 ..... \$29

Children (Ages 12 and under) ..... \$25 ..... \$24

### Show Only

Adults ..... \$45

Children (18 and under) ..... \$22

\*Group prices include dinner, show, tax and gratuity.

All shows, menus and performance dates are subject to change. Not recommended for children under age 3.

# MEMBERSHIP ORDER FORM

Name \_\_\_\_\_

Address \_\_\_\_\_

City \_\_\_\_\_ State \_\_\_\_\_ Zip \_\_\_\_\_

Phone \_\_\_\_\_

Email address \_\_\_\_\_

Membership amount \$ \_\_\_\_\_

Amount for additional tickets \$ \_\_\_\_\_

Dutch Apple Credit Amount \$ \_\_\_\_\_

**Please add \$5 processing fee for each order.**

Check enclosed in the amount of \$ \_\_\_\_\_

Credit card # \_\_\_\_\_

*Credit Cards Accepted: VISA, MasterCard, American Express & Discover.*

Expiration date \_\_\_\_\_

Table and/or section preferred (see chart) \_\_\_\_\_

Circle Section:    **A    B    C    D    E**

☐ Traditional Membership    ☐ Flex Membership

Choose One

## PRODUCER'S CIRCLE: 7 SHOWS - 25% OFF

- ☐ Any Matinee **\$315**  
☐ Sunday-Wednesday Evening **\$320<sup>25</sup>**  
☐ Thursday Evening **\$341<sup>25</sup>**  
☐ Friday & Saturday Evening **\$362<sup>25</sup>**

## DIRECTOR'S CIRCLE: 6 SHOWS - 20% OFF

- ☐ Any Matinee **\$288**  
☐ Sunday-Wednesday Evening **\$292<sup>80</sup>**  
☐ Thursday Evening **\$312**  
☐ Friday & Saturday Evening **\$331<sup>20</sup>**

## DIRECTOR'S CIRCLE: 5 SHOWS - 20% OFF

- ☐ Any Matinee **\$240**  
☐ Sunday-Wednesday Evening **\$244**  
☐ Thursday Evening **\$260**  
☐ Friday & Saturday Evening **\$276**

## STAR CIRCLE: 4 SHOWS - 15% OFF

- ☐ Any Matinee **\$204**  
☐ Sunday-Wednesday Evening **\$207<sup>40</sup>**  
☐ Thursday Evening **\$221**  
☐ Friday & Saturday Evening **\$234<sup>60</sup>**

## STAR CIRCLE: 3 SHOWS - 15% OFF

- ☐ Any Matinee **\$153**  
☐ Sunday-Wednesday Evening **\$155<sup>55</sup>**  
☐ Thursday Evening **\$165<sup>75</sup>**  
☐ Friday & Saturday Evening **\$175<sup>95</sup>**

Per Person

## 2021 Season

	TOTAL # OF MEMBERSHIPS	PREFERRED DATE	1ST ALTERNATE DATE	ADDITIONAL ADULTS - 10% Discount*	ADDITIONAL STUDENTS (ages 13-18) * \$30	ADDITIONAL CHILDREN (ages 3-12) * \$25
Always a Bridesmaid						
Happy Days						
On Your Feet						
Beauty and the Beast						
Grumpy Old Men						
Mamma Mia						
Miracle on 34th Street						

## Children's Shows

(No Discount)

	PREFERRED DATE	1ST ALTERNATE DATE	# OF ADULTS	# OF CHILDREN
The Adventures of Flat Stanley				
The Rainbow Fish				
The Descendants				
No Dogs Allowed				

*\*Members receive a 10% discount OFF ORIGINAL TICKET PRICE on all additional seats for adult persons attending with you. Titles and schedules are subject to change.*

**Complete form and mail or fax with payment to:**

Attn: Membership Department  
 Dutch Apple Dinner Theatre  
 510 Centerville Road Lancaster, PA 17601

**FAX: 717-898-1546**

**Order online at DutchApple.com**

**Phone orders will be taken after January 1, 2021.**

# DUTCH APPLE IS JUST A FEW HOURS FROM ALL MAJOR CITIES ON THE EAST COAST!

## DISTANCE AND DRIVING TIMES

Traveling From	Distance	Driving Time
Baltimore, MD	73 miles	1.5 hours
Pittsburgh, PA	235 miles	4 hours
Philadelphia, PA	77 miles	1.5 hours
Richmond, VA	212 miles	4 hours
New York City, NY	165 miles	3 hours
Washington, DC	118 miles	2.5 hours



## COME VISIT US AT OUR SECOND LOCATION!



Fort Myers, FL ✨ [BroadwayPalm.com](http://BroadwayPalm.com)  
Right near the beaches of Fort Myers and Sanibel



510 Centerville Road  
Lancaster, PA 17601

717-898-1900  
[DutchApple.com](http://DutchApple.com)

